

FOR SALE

18889 92 Ave Surrey



DEVELOPMENT PROPERTY



GAGAN SOHI

Personal Real Estate Corporation

#105 - 7928 128 St
Surrey BC V3W 4E8
604-307-9840

CENTURY 21 COMMERCIAL

PROPERTY DESCRIPTION



CIVIC ADDRESS: 18889 92 Avenue Surrey

OCP: Mixed Employment

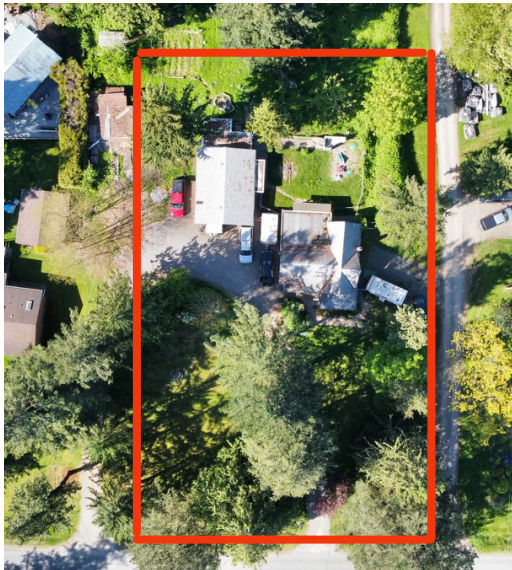
ZONING: One-Acre Residential Zone (RA)

SIZE/DENSITY: 43,322 sq. ft.

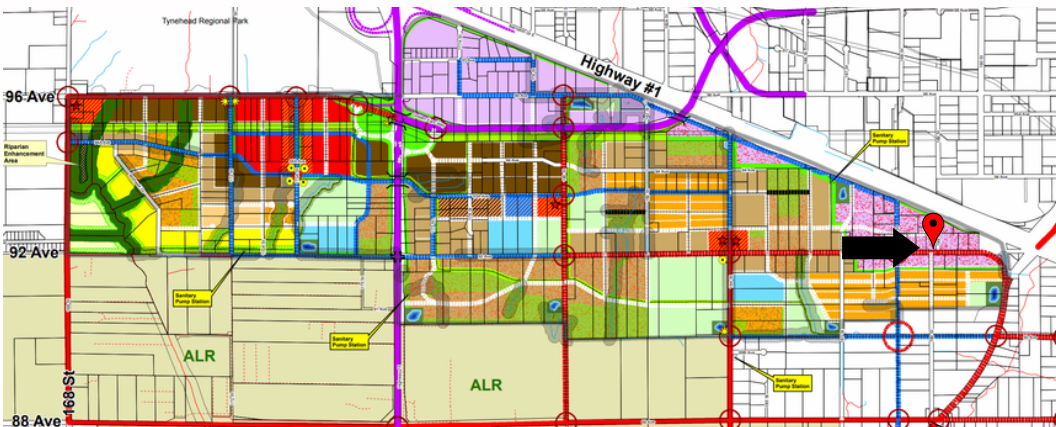
PRICE: Contact Listing Agent

OPPORTUNITY

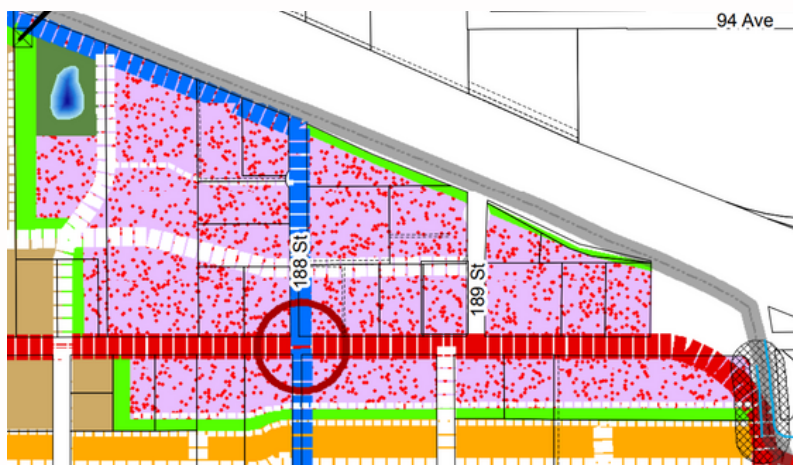
Prime holding property in the Anniedale Tynehead NCP designated Industrial Business Park which allows for mixed use office and warehouse. Minutes to Trans-Canada Highway, Golden Ears Way & the Port Kells Industrial Park. A great investment to hold and develop in the future.



Anniedale-Tynehead Land Use Concept



LAND USE



LAND USE

DENSITY

MAXIMUM BUILDING HEIGHT



Industrial Business Park

0.5 to 1.0 FSR

4 Stories (15 m)