

FOR LEASE

2890 Grandview Hwy Vancouver



FREE STANDING BUILDING



**GAGAN
SOHI**
REAL ESTATE GROUP

**CENTURY 21
COMMERCIAL**
COASTAL REALTY LTD.

#105 - 7928 128 St
Surrey BC V3W 4E8
604-753-1000

PROPERTY DESCRIPTION



CIVIC ADDRESS: 2890 Grandview Hwy, Vancouver

AREA: Renfrew-Collingwood

ZONING: C-1 (COMMERCIAL)

LAND SIZE: 8,072 sq. ft.

BUILDING SIZE: 2,400 sq. ft.

PRICE: Contact Listing Agent



OPPORTUNITY

Opportunity to lease spacious 2,400 retail space with 8,072 sq. ft. land in the Renfrew-Collingwood district in a high traffic corridor. The property boasts an enviable location along Grandview Hwy, an area positioned for significant growth with ample parking. This property is conveniently located near the Burnaby border on Vancouver's east side. High profile location 300 feet across from Renfrew SkyTrain station.



TRANSIT SCORE

76



BIKE SCORE

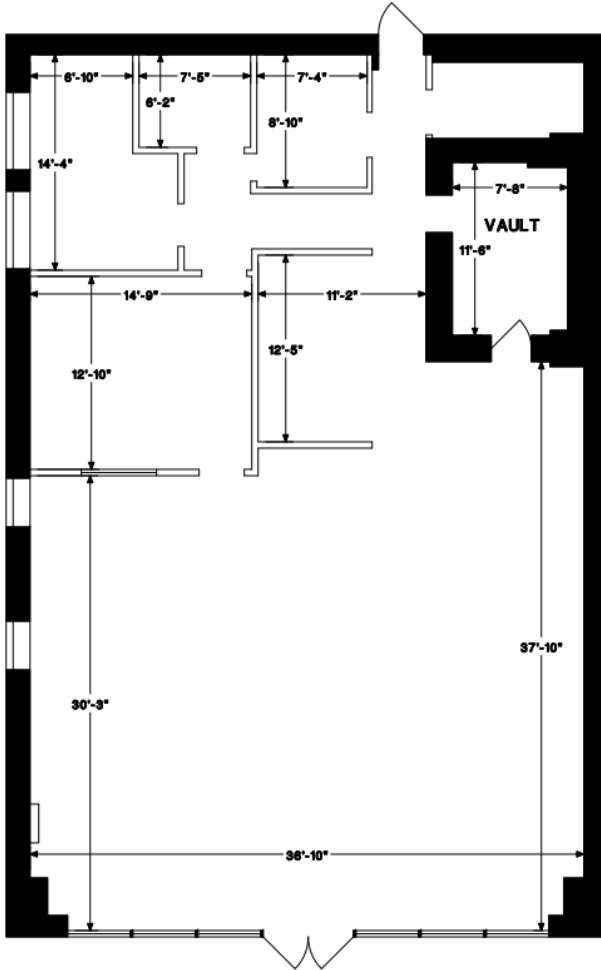
86



WALK SCORE

73

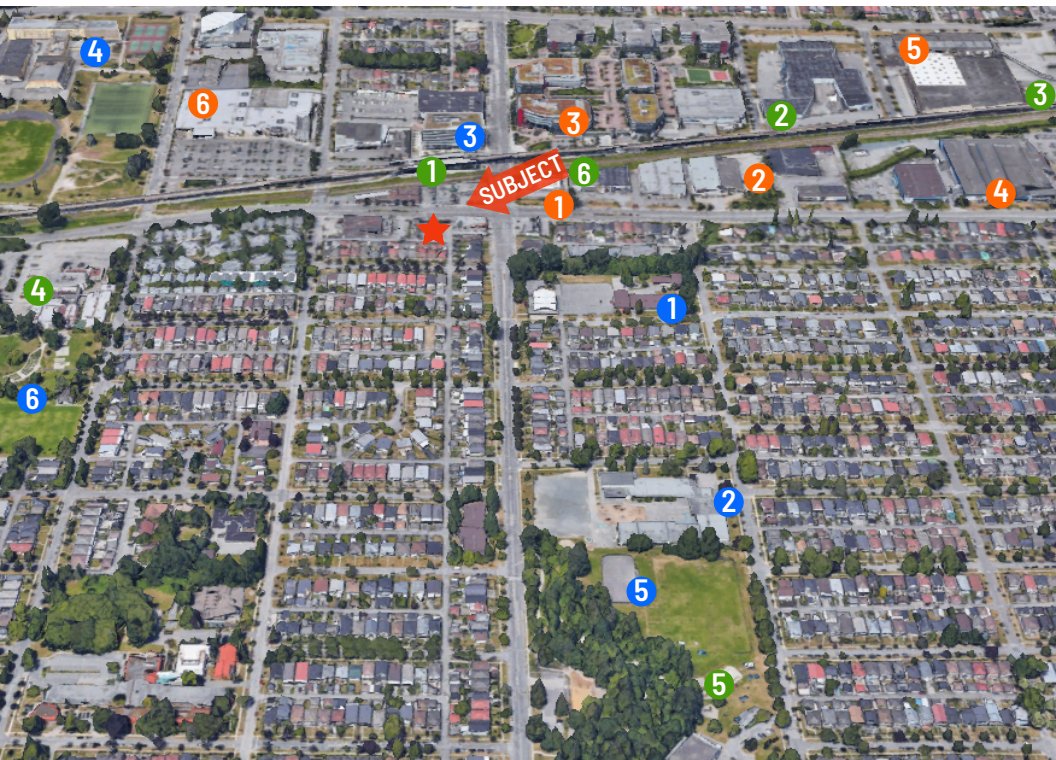
FLOOR PLAN



PROPERTY DETAILS

- 2,400 sq. ft. Building
- 8,072 sq. ft. Land
- Fully Fenced
- Prime Retail Space
- Partially Renovated
- Up to 12 parking stalls

AMENITIES



SCHOOLS AND PARKS

- 1 St. Jude Elementary School
- 2 Nootka Elementary School
- 3 LaSalle College Vancouver
- 4 Vancouver Technical Secondary
- 5 Renfrew Community Park
- 6 Beaconsfield Park

FOOD AND SHOPPING

- 1 McDonalds
- 2 Staples
- 3 Starbucks
- 4 Real Canadian Superstore
- 5 BC Liquor Store
- 6 Lowe's Home Improvement

POINTS OF INTEREST

- 1 Renfrew Station
- 2 Essentials of Athletics
- 3 Rupert Station
- 4 Italian Cultural Centre
- 5 Renfrew Park Community Centre
- 6 Backs in Action Rehab & Wellness Centre

GAGAN SOHI

Personal Real Estate Corporation

#105 - 7928 128 St
Surrey BC V3W 4E8
604-753-1000

E.&O.E.: This communication is not intended to cause or induce breach of an existing agency agreement. The information contained herein was obtained from sources which we deem reliable and, while thought to be correct, is not guaranteed by Century 21 Coastal Realty.

CENTURY 21
COMMERCIAL